

Under the direction of Endrias Abeyi

- HEAD Genève -

trashmanship

- M.A.I.A -

X Nina F. D'Elia H.

Under the direction of Endrias Abeyi

- HEAD Genève -

from trash to treasure

- M.A.I.A -

X Nina F. D'Elia H.

Theoretical Thesis

-Generational replacement

Generational replacement is a theory that focuses on **attributes changes in values** between young people and their elders to their different circumstances growing up¹

-Interiority

“The **interior has the capacity to be quite free, in a way that buildings in the city cannot be.** And that difference, the ‘interiority of the interior’, gives it license to be anything really”.²

-Sustainable development

Sustainable development is development that meets the needs of the **present** without compromising the ability of **future** generations to meet their own needs³



1 Generational replacement is a theory proposed by Paul R. Abramson and Ronald Inglehart

2 As Mark Pimplott mentions on an interview for Volume Magazine in 2012

3 Our Common Future, also known as the Brundtland Report, was published on October 1987 by the United Nations through the Oxford University Press.

Sustainable development



significantly reduce the use
of new raw materials

Amsterdam Circular Strategy 2020-2025

The strategy aims to significantly reduce the use of new raw materials, thus contributing to a sustainable city. In the coming years, the City will map out various material flows, from entry to processing, in order to preserve valuable raw materials. The aim is to halve the use of new raw materials by 2030 and to achieve a fully circular city by 2050.



We are fast **running out of natural resources**, by definition, finite.

Therefore we must work towards a

Sustainable development

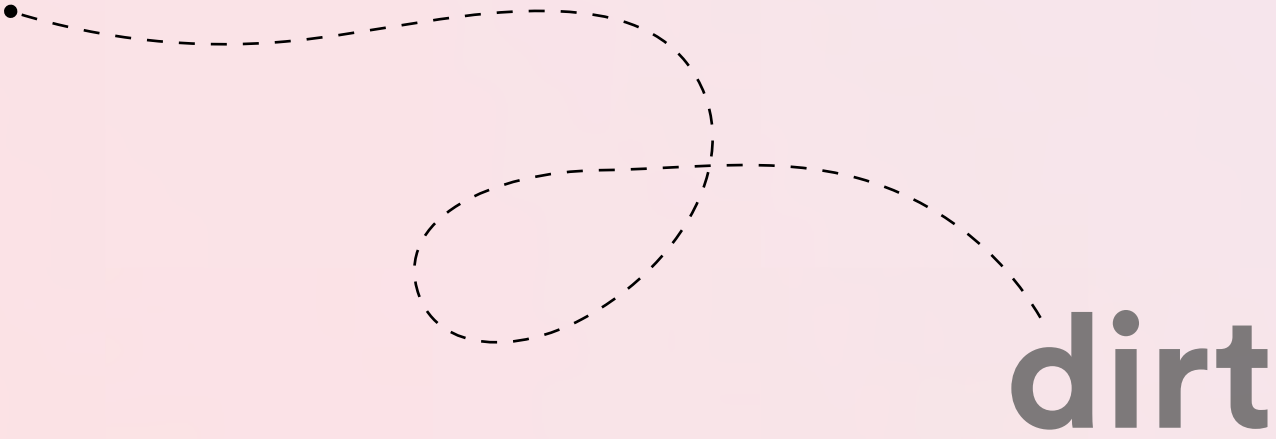
Where can we find **abundant resources** that doesn't compromise our future generations?

Trash as a primary source or as a raw material.

my train of thought

Dirt is matter out of place ⁰¹

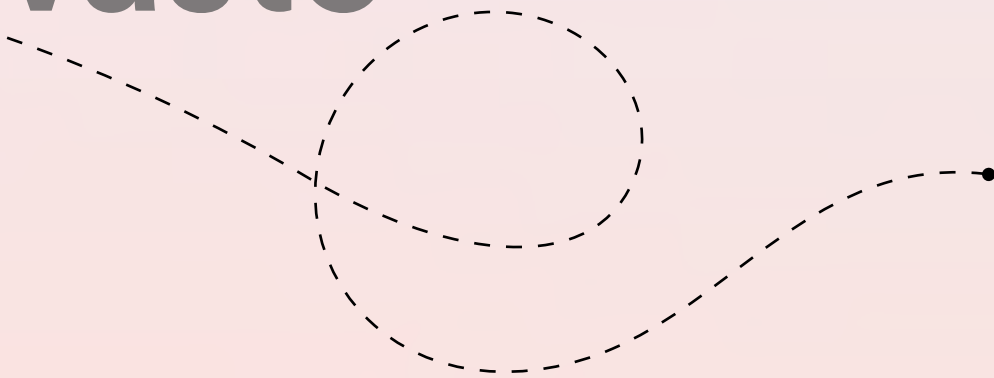
Mary Douglas



dirt

trash

waste



Waste is every
object, plus time ⁰²

Brian Thill

trash

objects out of place



trash

Is a problem of logistics



skill in a particular craft.

craftsmanship

the quality of design and
work shown in something
made by hand; artistry.

trashmanship

the quality of creating objects out
of waste, with analog techniques
and digital technologies
throughout a design approach.

how should we treat

trash

?

**primary
source**

local

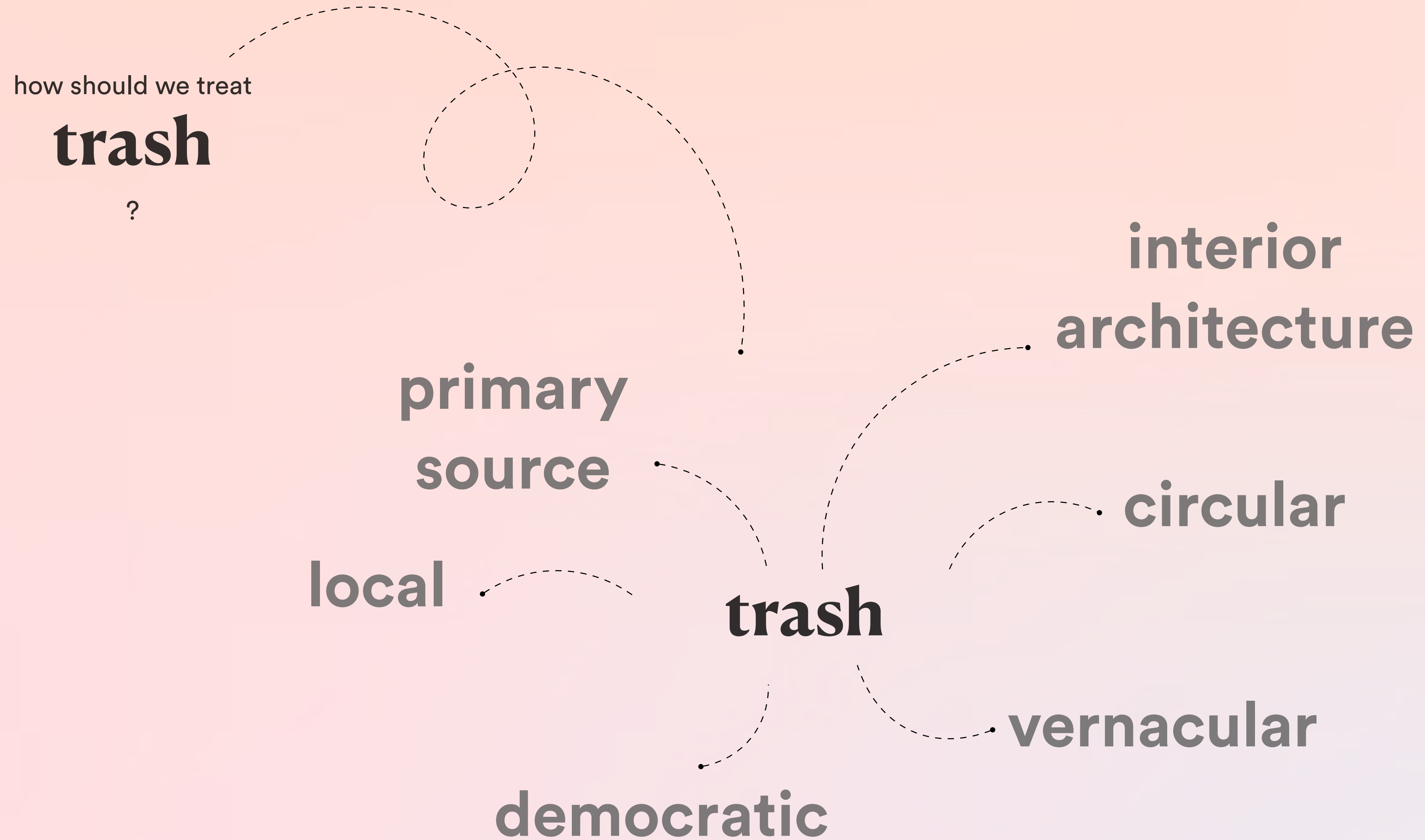
trash

democratic

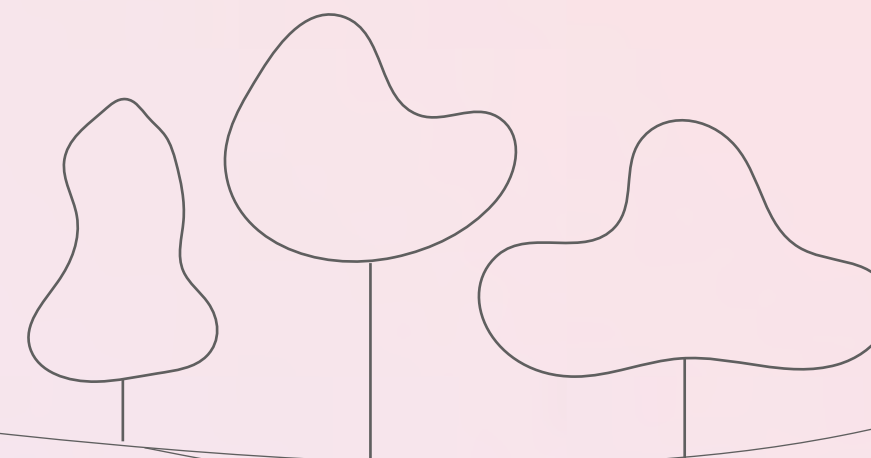
**interior
architecture**

circular

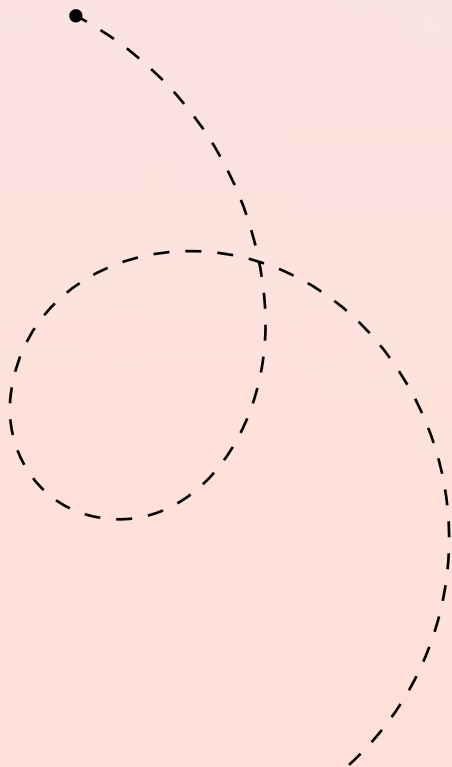
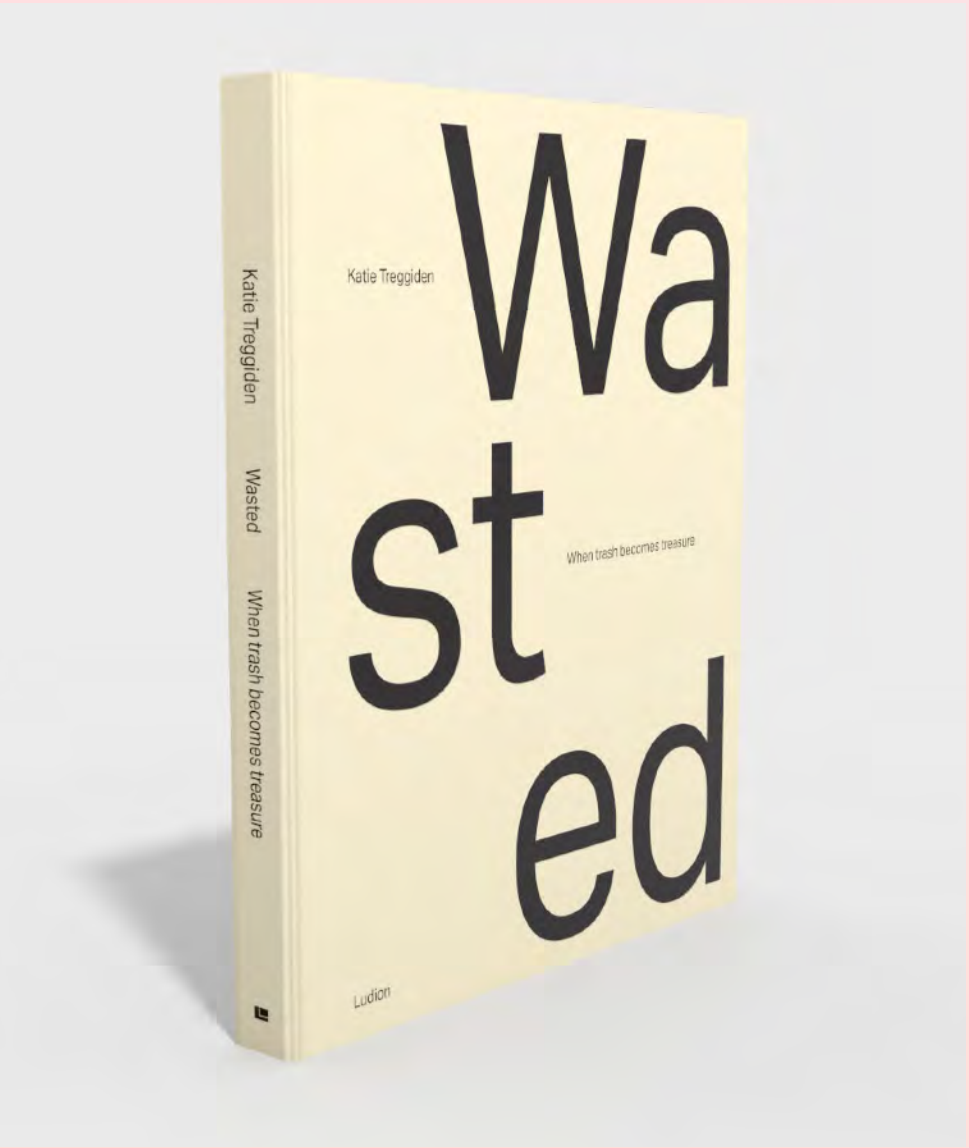
vernacular



trash as a raw material:



raw material



Wasted x Katie Treggiden

Wasted, celebrates 30 optimistic and enterprising designers, makers and manufacturers who use waste as their primary resource



where can I find local waste?

Mobilitri is a mobile recycling center that collects bulky and special waste.

(Some of the waste can be then retrieved by charities as the CSP)

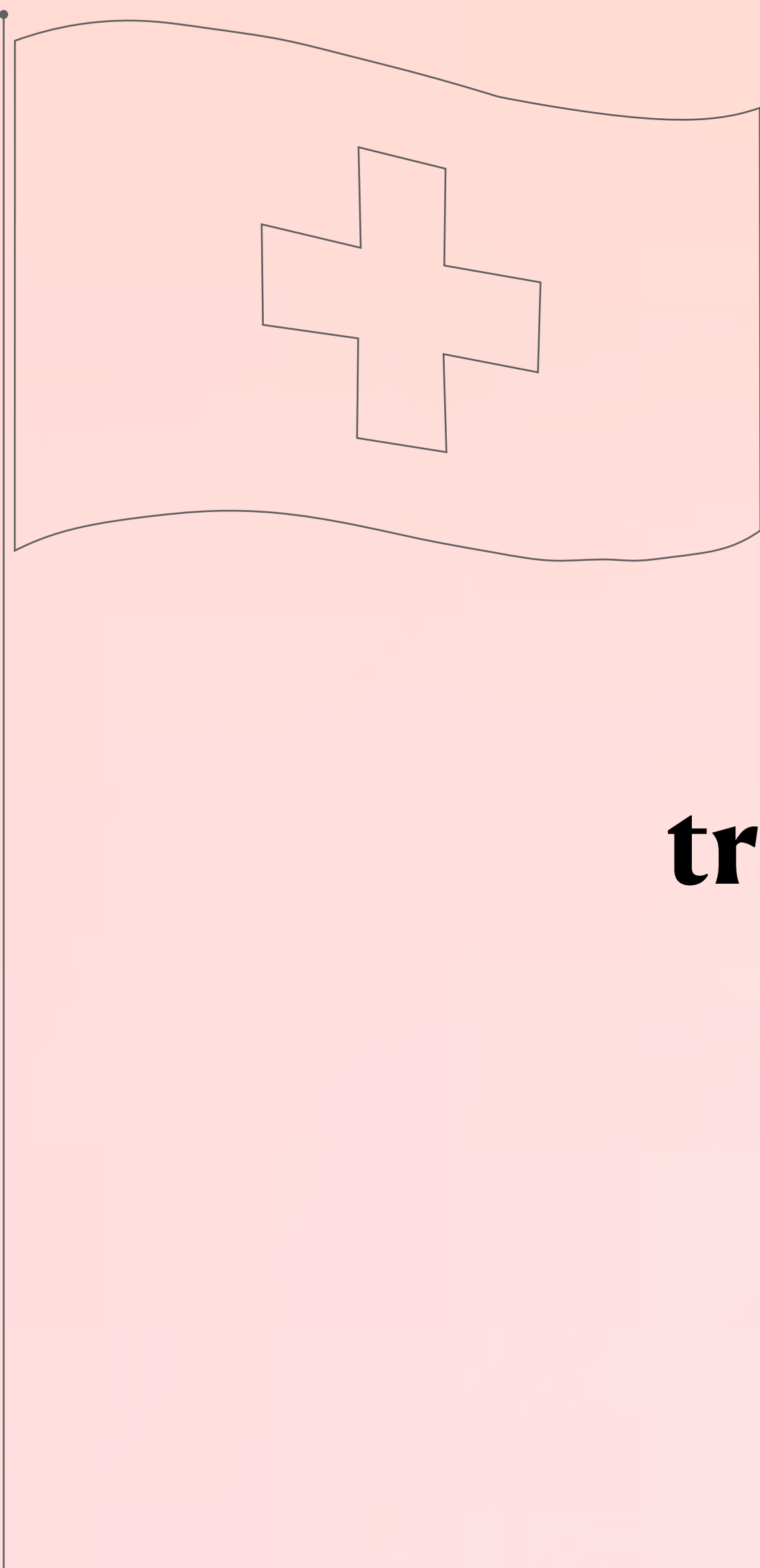
Some of the waste?

The CSP has a **strict policy** on donations, many objects in good shape still finish in the trash.

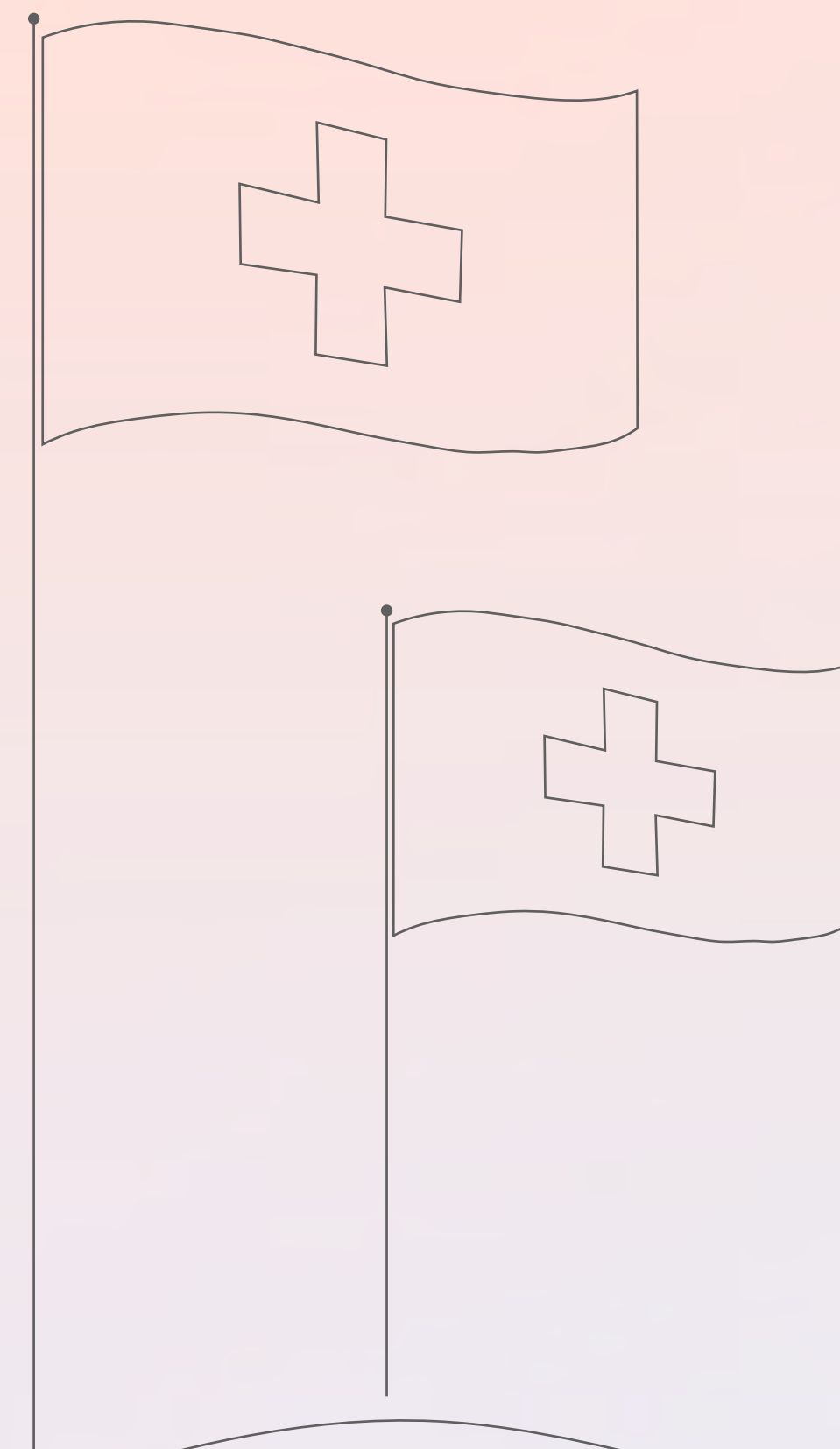
The outcome:

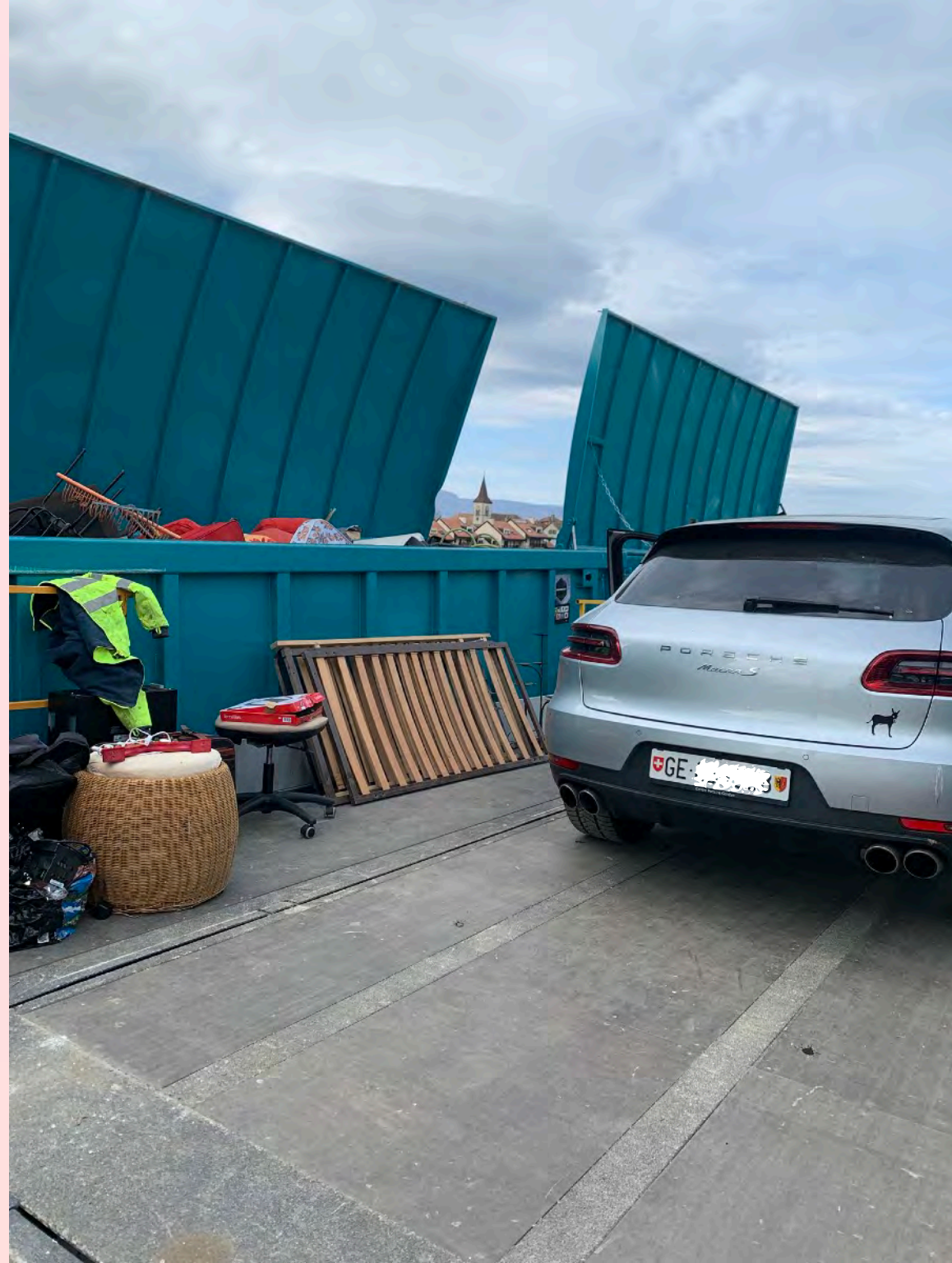
Collect objects rejected by the CSP and convert them from trash to treasure

my train of thought



trash as a vernacular re-source :





Swiss trash



01



02



03



04



05



06



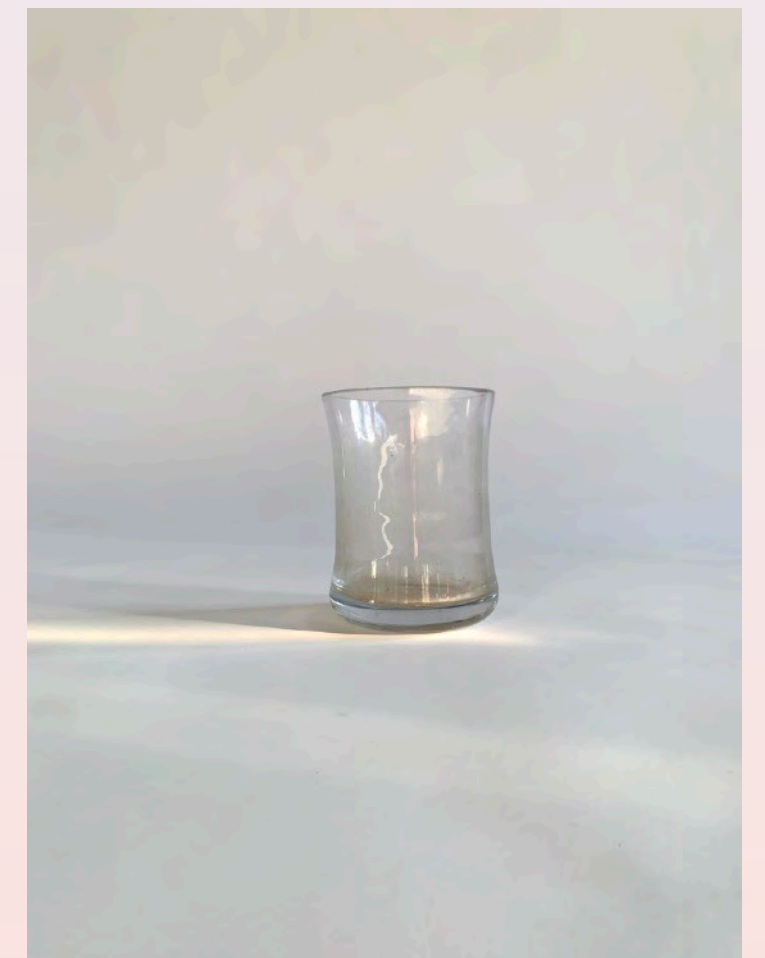
07



08



09



10

\$

\$

\$

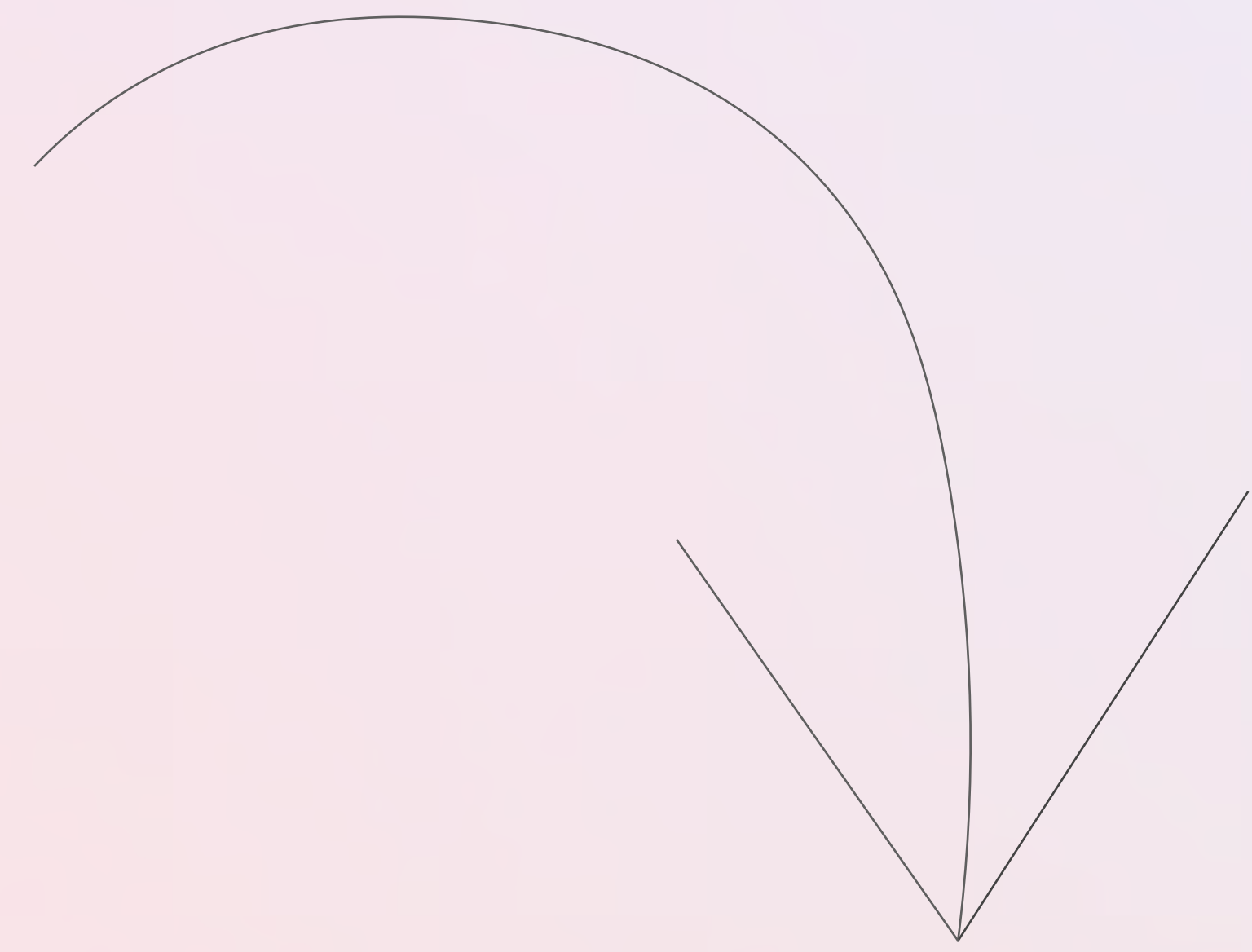
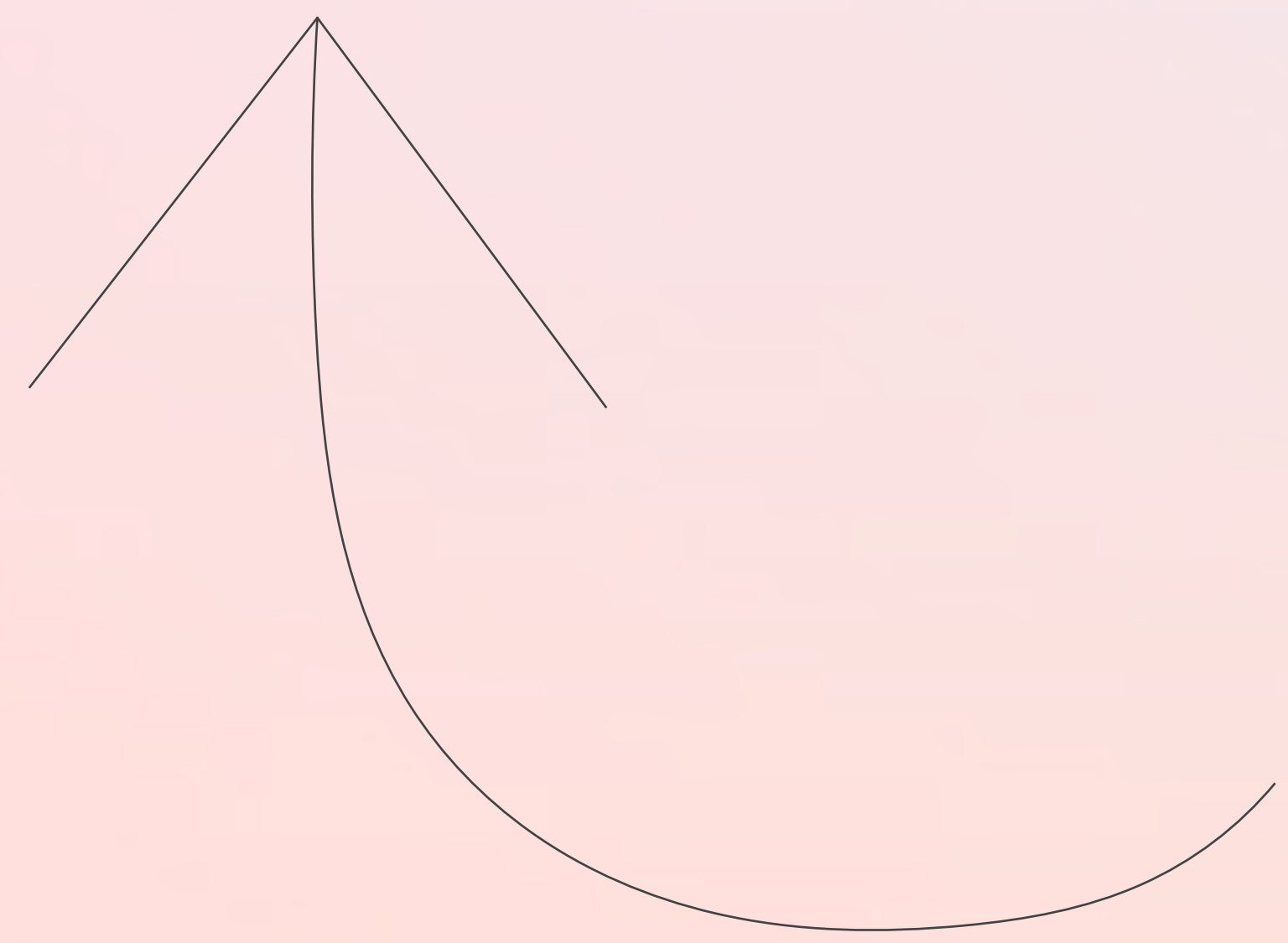
\$

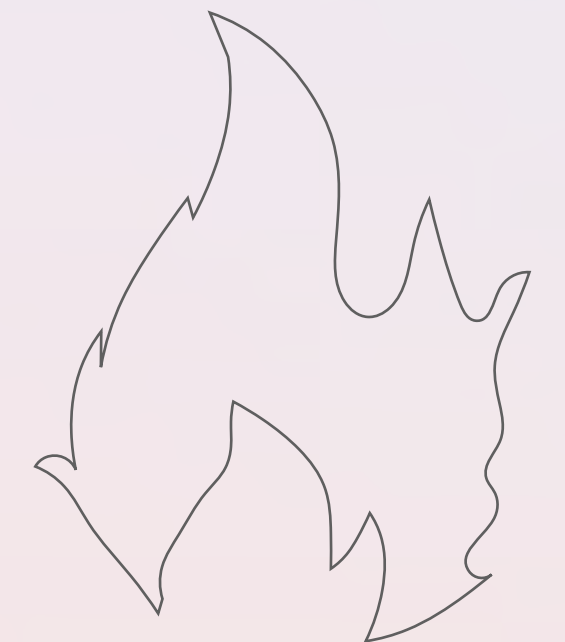
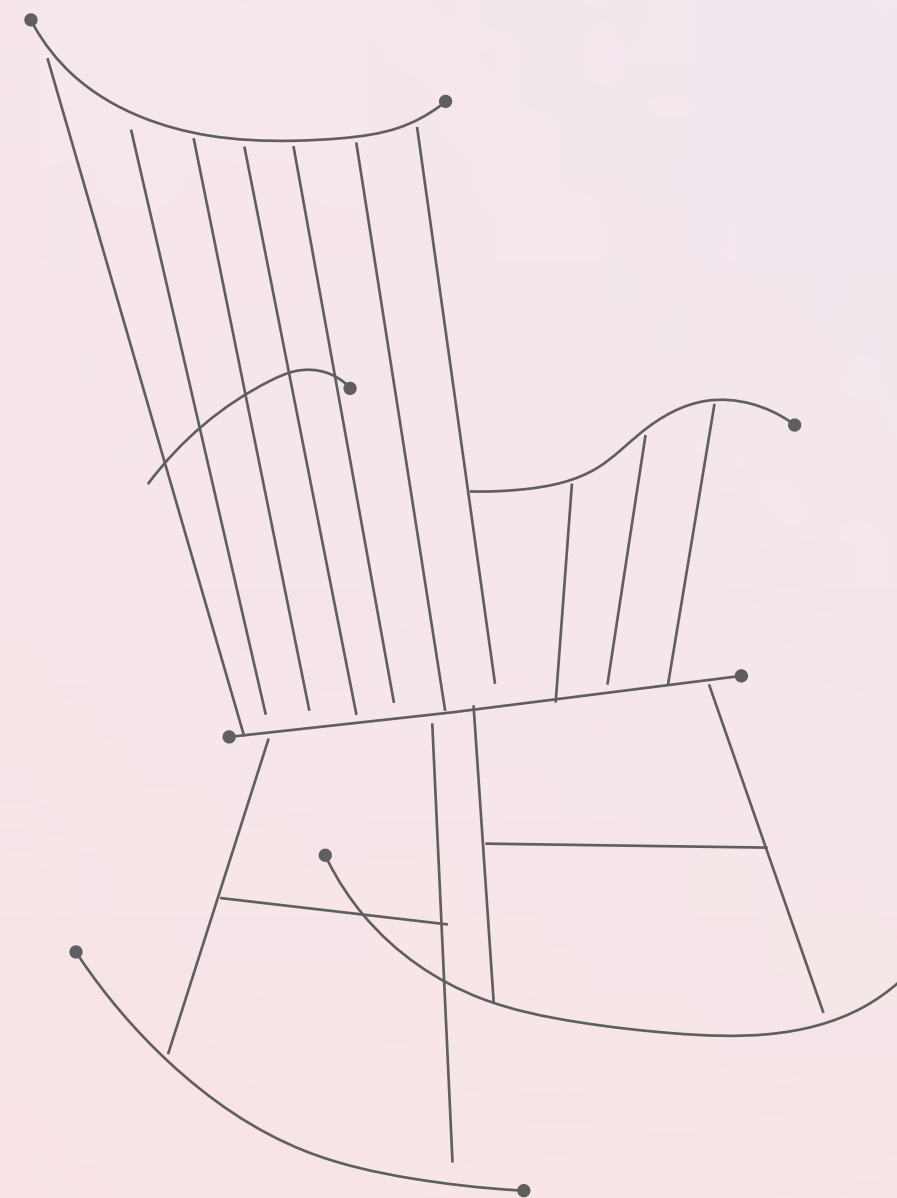
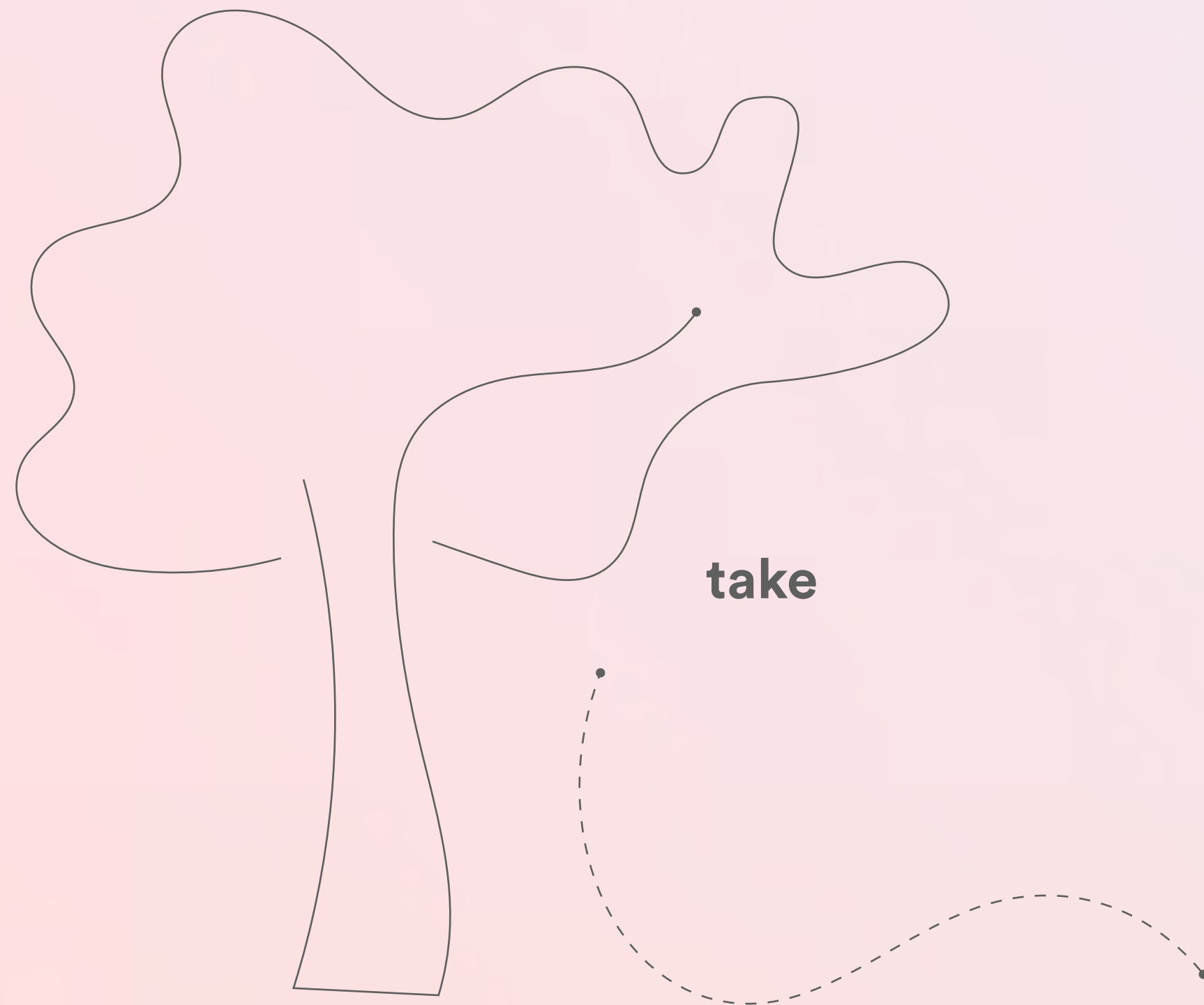
trash as circular economy model

\$

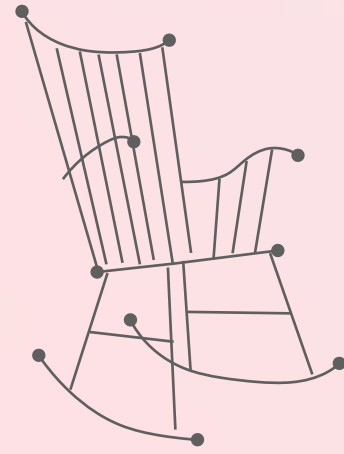
\$

\$





**1 trash as
raw materials**

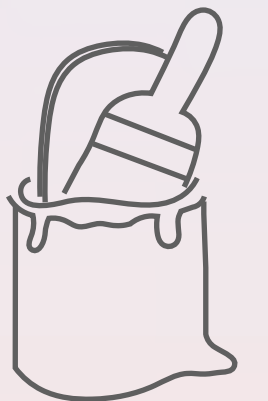


**2 trashmanship
design principles**

mono-materials
value based

**3 responsible
production**

intervention with
wasted materials



deconstruction

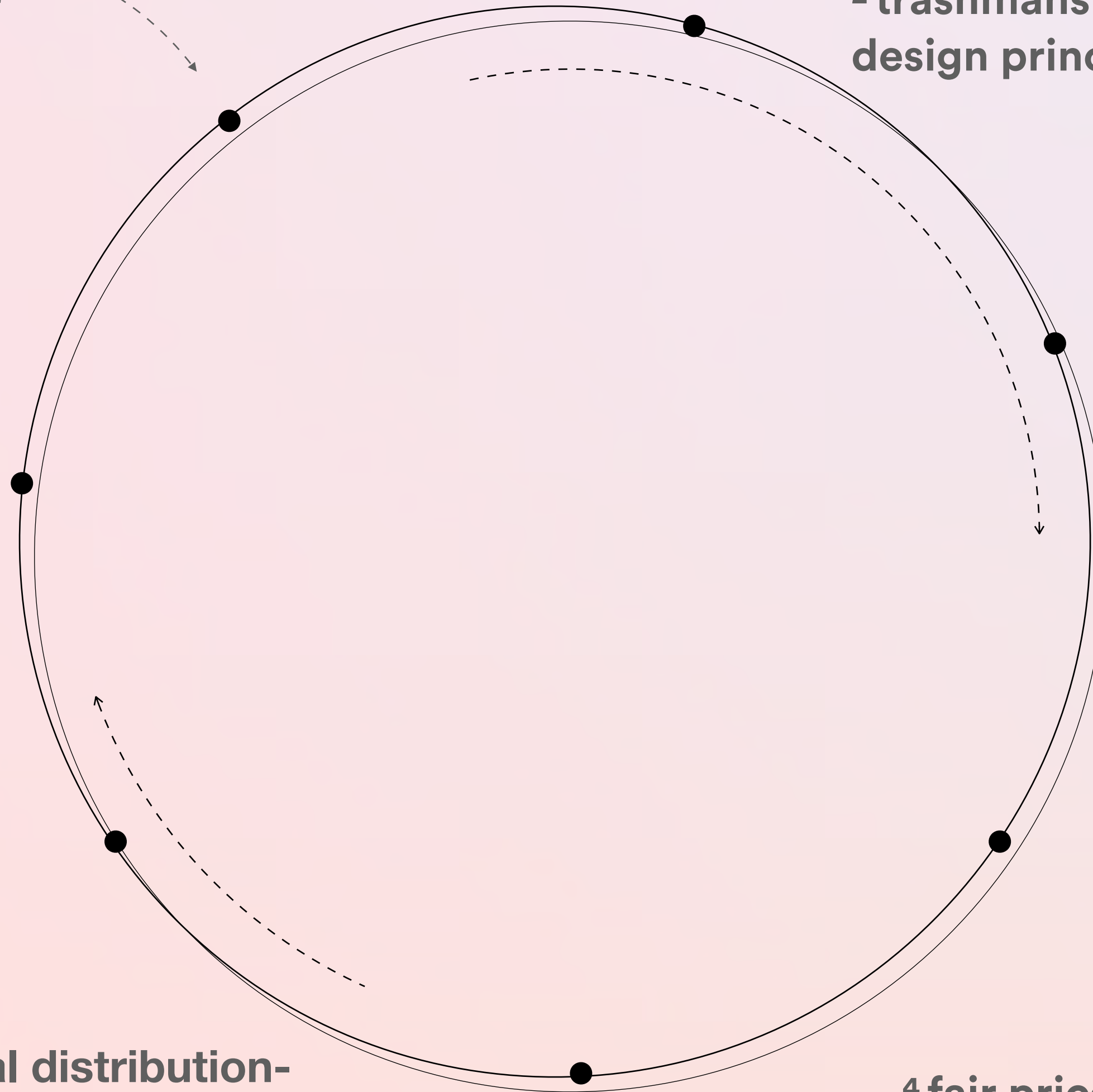
4 fair price

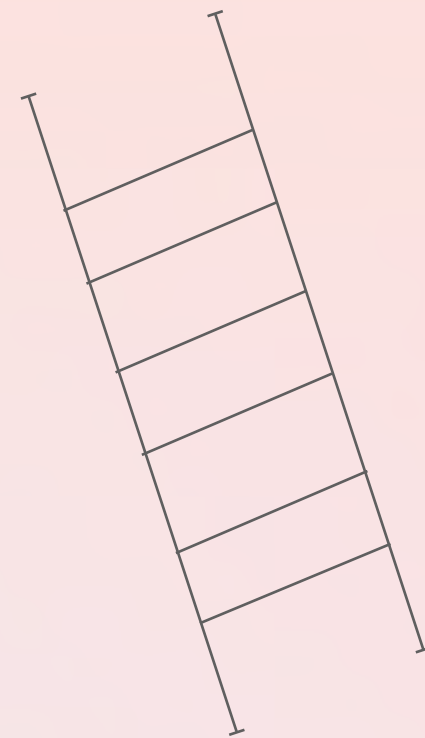
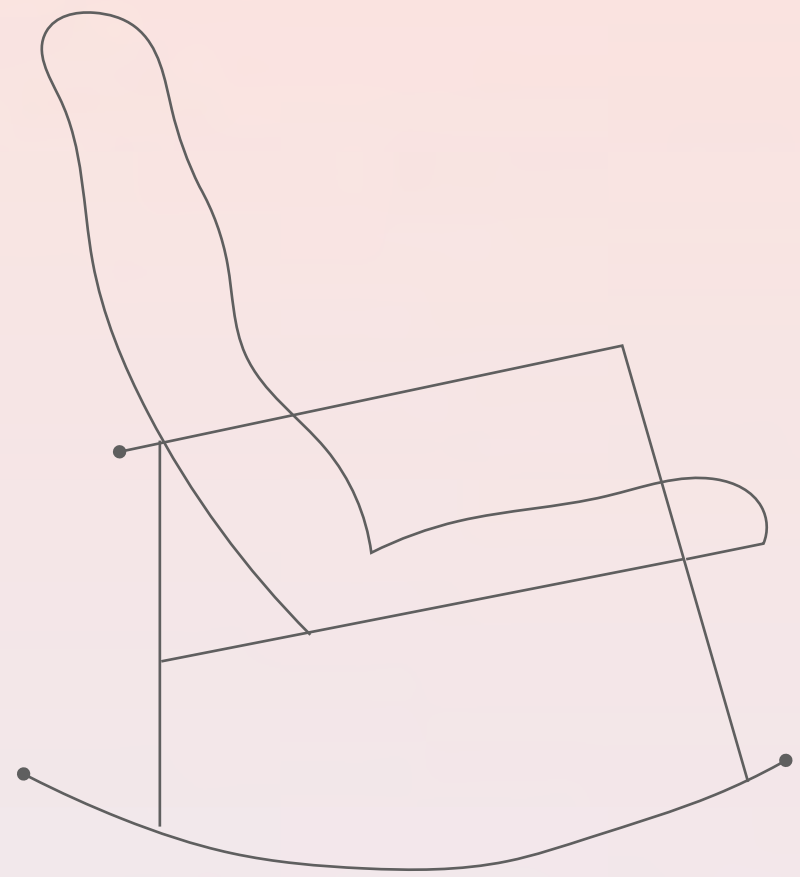
(based on the hours of intervention)

**5 local distribution-
consumption**

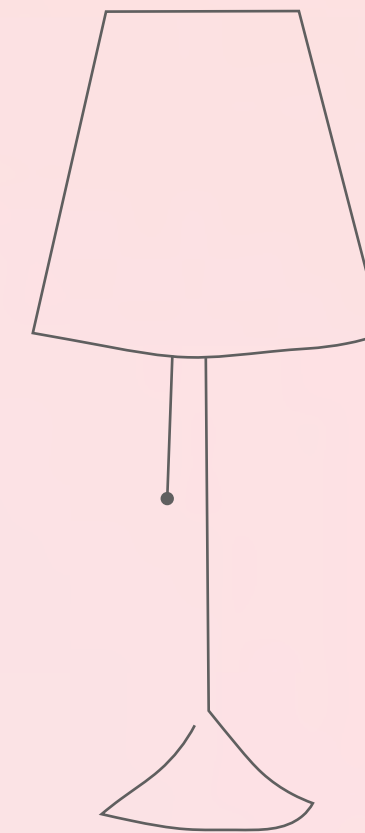
direct costumer
& commissions

**6 new methods
of collection**





trash within interior architecture



supercycling process of

some objects I found in the trash



(Video)



experimenting with

Some objects I found in the trash



products

commissions

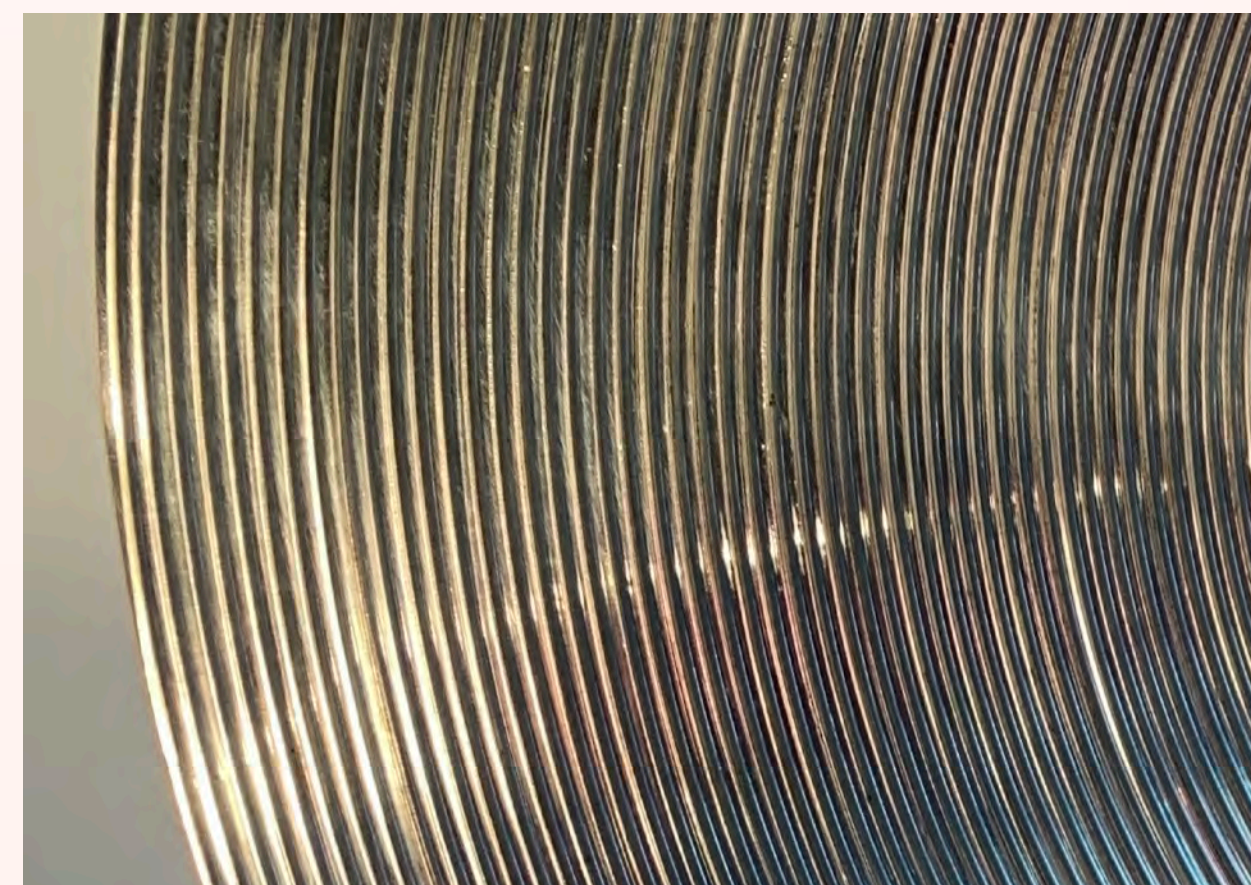
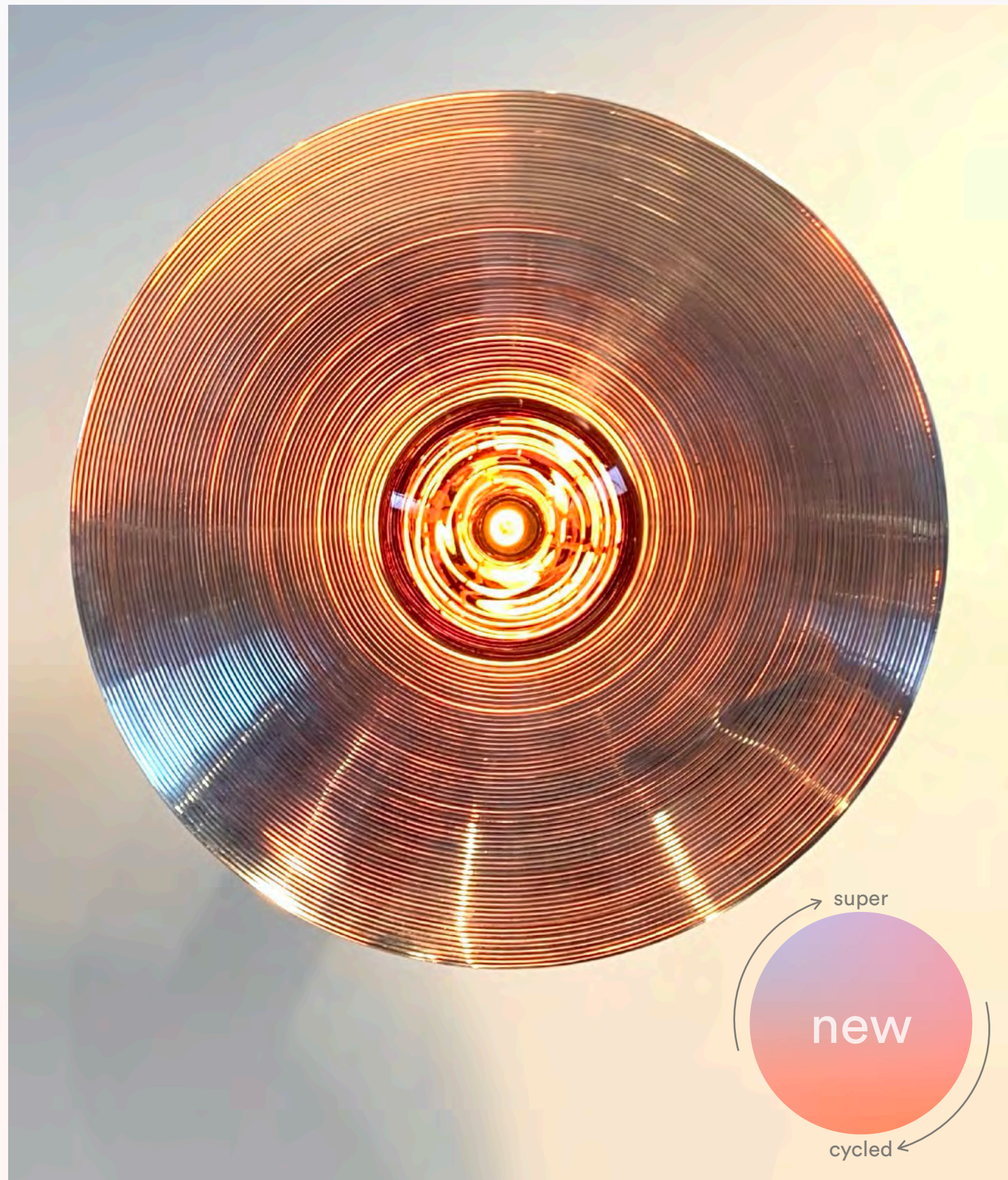
brainfood

stay in touch!

ARCHIVE

lighting/
wall

trashmanship



fruit bowl wall sconce

The supercycled << fruit bowl sconce >> is composed of 3 autonomous pieces that can adapt for an horizontal or vertical position. The screen is made out of brass with silver plating and the iron support creates a 30 cm gap that allows different reflections depending on the natural lighting of the environment.

Methodology
[#repurpose](#)

Where do I come from?
[Go to map](#)

Collaborators:
Xavier Plantevin + Elodie Wismer

General dimensions:
Screen 61 (d) x 10 cm
Pedestal 10 x 30 cm

[downloads + info](#)

products

commissions

brainfood

stay in touch!

ARCHIVE

furniture/
tables

trashmanship

kita table

The supercycled << kita table >> is composed by two autonomous pieces. The glass top is engraved with an aerial view of the Swiss mountains and the iron base is covered with automotive paint in a salmon shade.

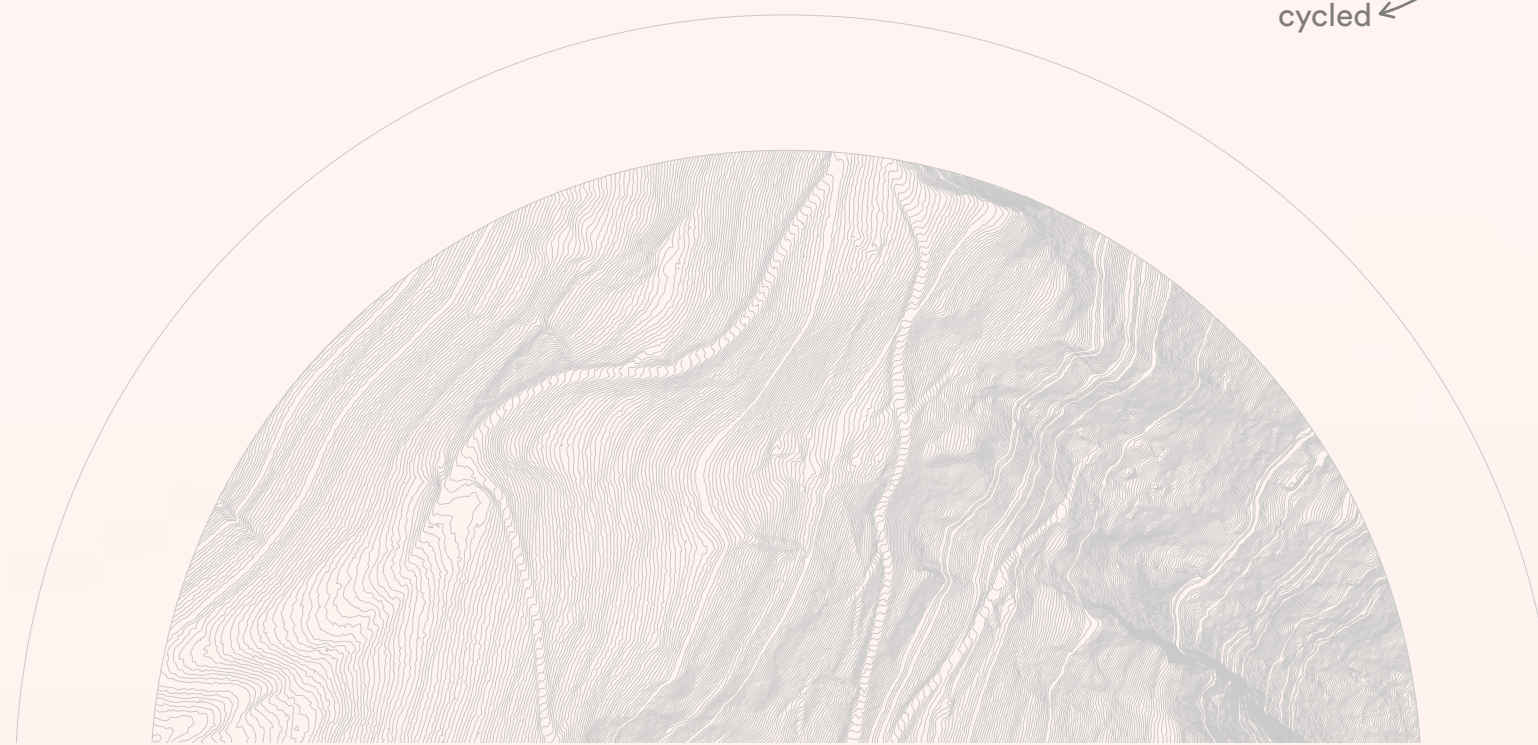
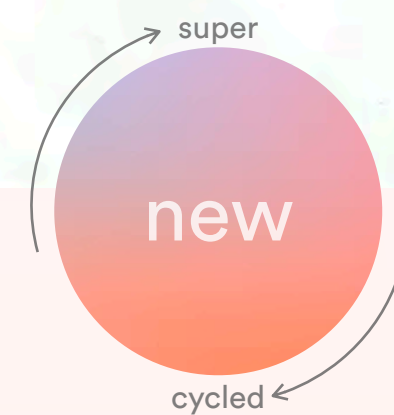
Methodology
#engraving

Where do I come from?
[Go to map](#)

Collaborators:
DC Atelier Finishing
Engraving file: Filza Parmar
Engraving: Sergio Streun

General dimensions:
75 × 44 cm

downloads + info



products

commissions

brainfood

stay in touch!

ARCHIVE

furniture/
seating

trashmanship



bubblegum chair

The supercycled << bubble gum chair >> is made out of beech wood. Its original wicker seat was patched with a resistant colorful thread that matches the purple details that cover the complex geometry of its legs.

Methodology

#patching

Where do I come from?

[Go to map](#)

Supercycled resources:

Thread: Camila G. Tapia

Paint: HEAD Geneve

Collaborators:

Weaving technique by Camila G. Tapia

General dimensions:

52 × 96 cm

[downloads + info](#)

products

commissions

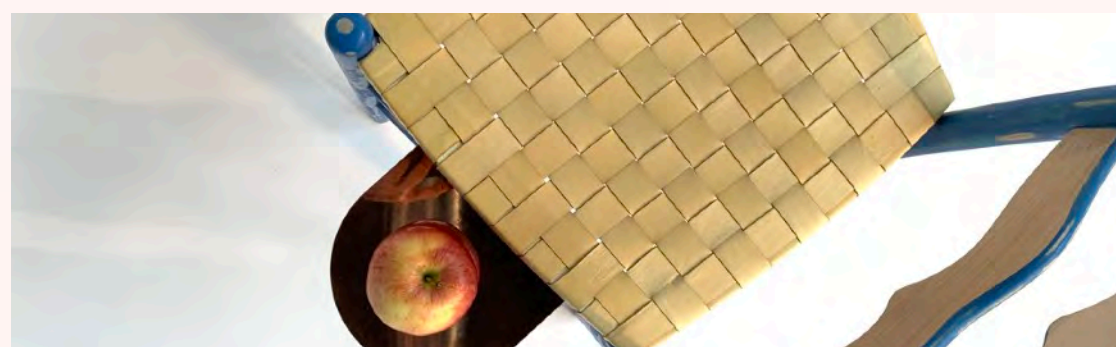
brainfood

stay in touch!

ARCHIVE

furniture/
seating

trashmanship



rolex woven leather chair

The supercycled << rolex woven leather chair >> preserves its natural paint with a different pattern result of a sanding technique that conceal existing little slits. The rotten wicker of the chair was replaced with leather stripes and a round piece of copper adds a shiny detail that serves as a side table.

Methodology
[#engraving](#)

Where do I come from?
[Go to map](#)

Supercycled resources:
Leather: Rolex vía HEAD Geneve
Copper: HEAD Geneve

Collaborators:
Copper piece: Xavier Plantevin

General dimensions:
50 × 90 cm

[downloads + info](#)

products

commissions

brainfood

stay in touch!

ARCHIVE

furniture/
seating

trashmanship



the he's a keeper stool

The supercycled << he's a keeper stool >> is a timeless piece that it can be assembled and disassembled very easily for future repairs. A circular marble detail is inserted on the top of the wood stool as a decorative element that brings character to the piece.

Methodology
[#insert](#)

Where do I come from?
[Go to map](#)

Supercycled resources:
Marble: Marbrerie Rossi Sa
Wood intervention: Alex Simian

General dimensions:
30 x 45 - 60 cm

[downloads + info](#)

products

commissions

brainfood

stay in touch!

ARCHIVE

furniture/
seating

trashmanship



bleu nuit rocking chair

The supercycled << bleu nuit >> rocking chair is a unique piece (2/75) after returning to its natural color this chair was discreetly intervened with a powerful color that emphasize its reparations.

Methodology

#uncover #repair

Where do I come from?

[Go to map](#)

Supercycled resources:

Paint: Dany Champion

General dimensions:

70 x 120 cm



downloads + info

products

commissions

brainfood

stay in touch!

ARCHIVE

furniture/
seating

trashmanship



offcut puff

The supercycled <<offcut puff >> is ideal for relaxing after a long day. Its playful patterns cover some stains of its previous life. This puff matches perfectly with our [pillow duo](#).

Methodology

#patching #covering

Where do I come from?

[Go to map](#)

Supercycled resources:

Leather: Rolex via HEAD Geneve

Copper: HEAD Geneve

Collaborators:

Laser cutting: Sergio Streun +
Clement Schlemmer

General dimensions:

80 × 80 × 23

downloads + info

products

commissions

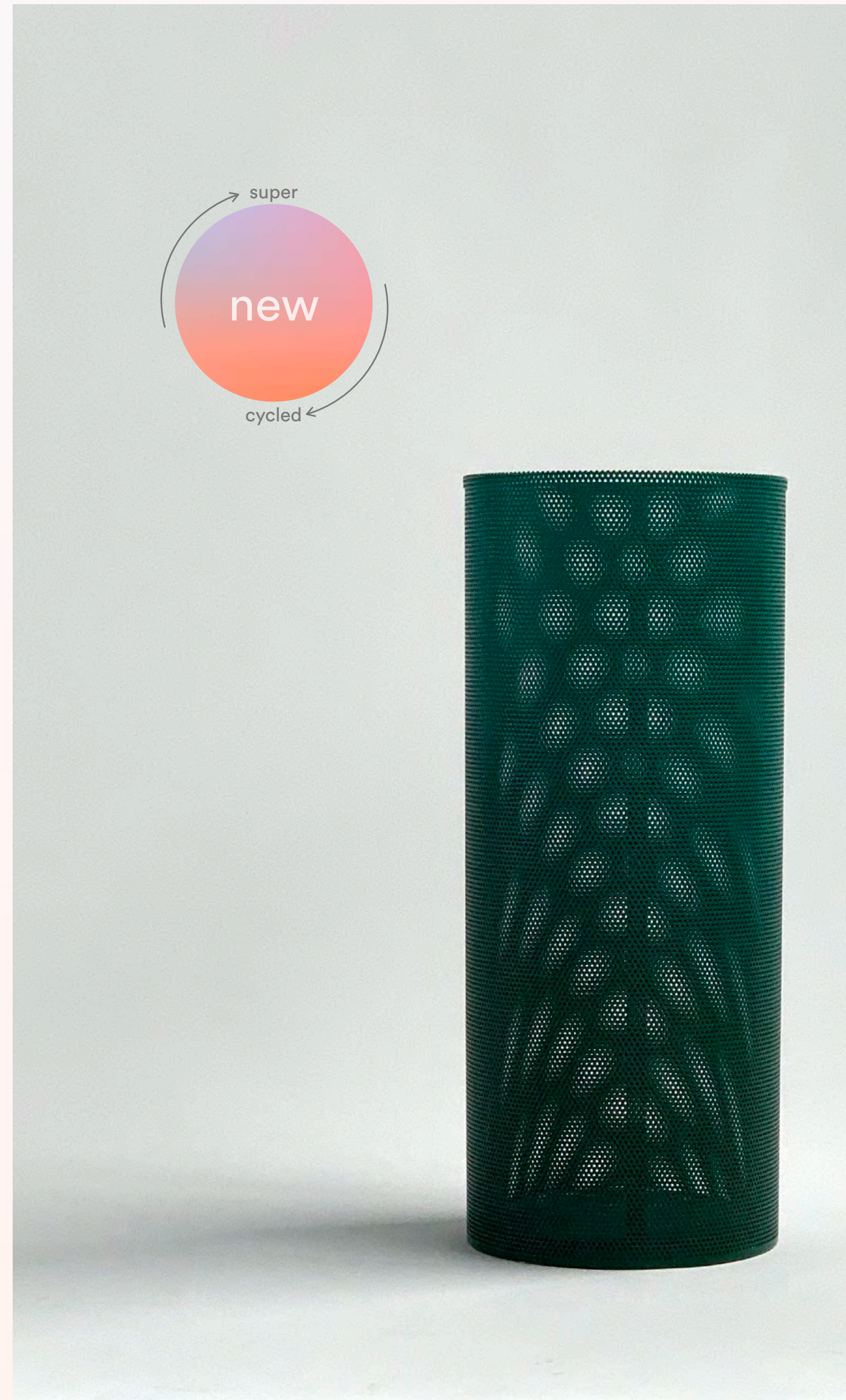
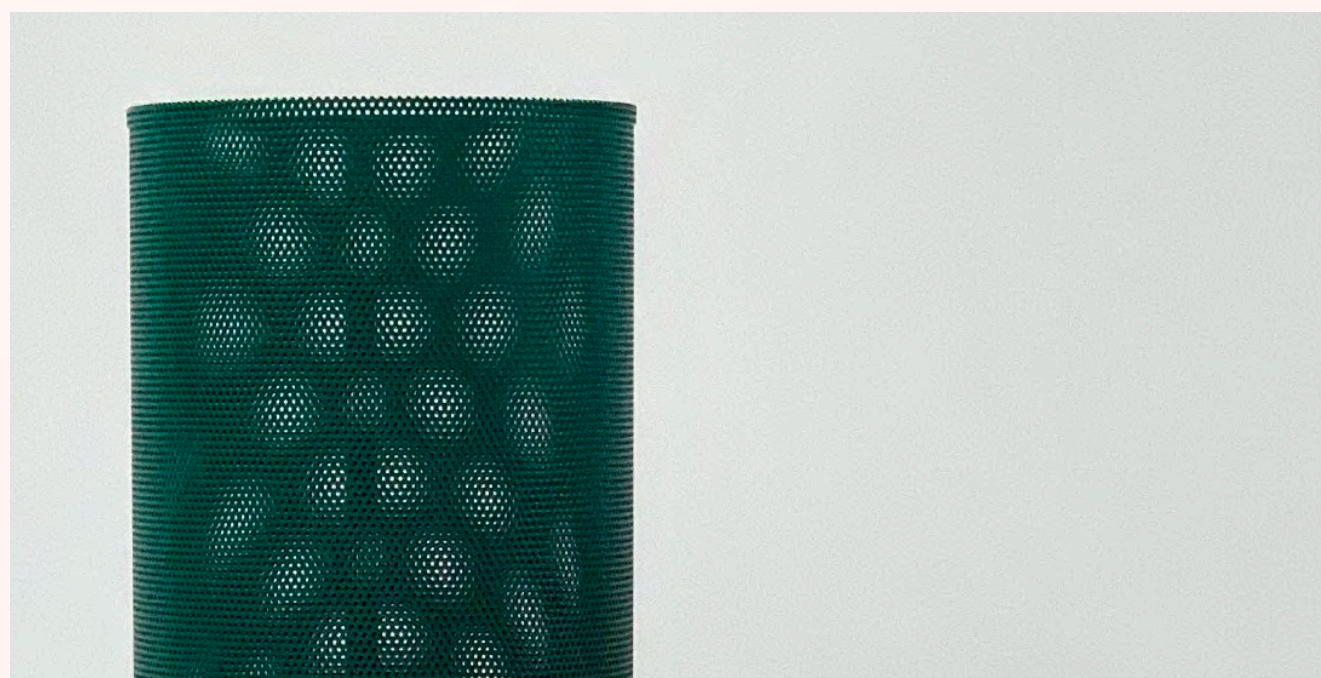
brainfood

stay in touch!

ARCHIVE

accessories/
storage

trashmanship



green on green dégradé bin

The supercycled <<green on green degrade bin>> is simple and multifunctional. The automotive paint makes it resistant for any purpose; it can be a trash bin, an umbrella holder or a base for any flat surface.

Methodology

#repairing #covering

Where do I come from?

[Go to map](#)

Collaborators:

DC Atelier Finishing

General dimensions:

Screen 20 × 70 cm

downloads + info

products

commissions

brainfood

stay in touch!

ARCHIVE

kitchen/
drinkware

trashmanship



astro shaver/fruit line pillow duo

Characterized by its color and softness the supercycled << astro shaver/fruit line pillow duo >> is the perfect match for any couch.

Methodology

#saving

Where do I come from?

[Go to map](#)

Collaborators:

Laser cutting: Sergio Streun +
Clement Schlemmer

General dimensions:

round 25 × 25 cm

square 30 × 30 cm

downloads + info

products

commissions

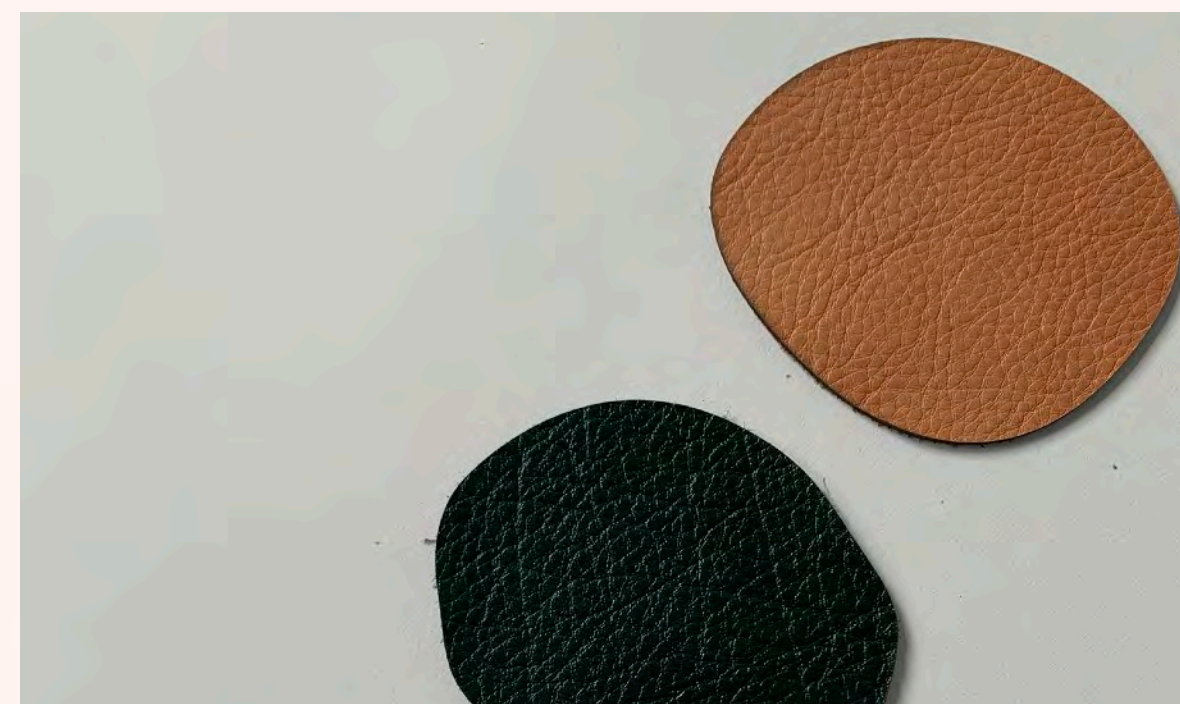
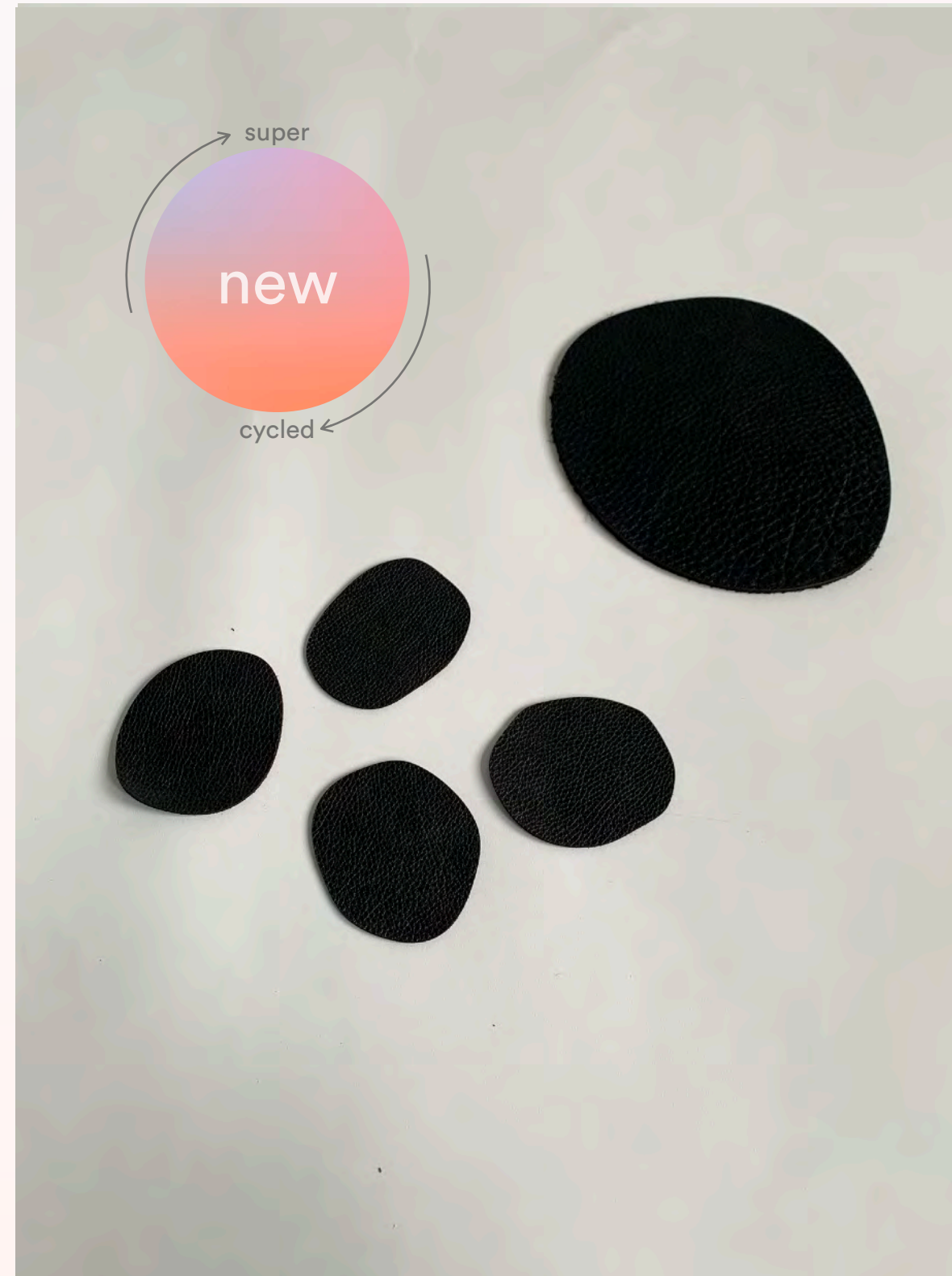
brainfood

stay in touch!

ARCHIVE

kitchen/
drinkware

trashmanship



leather stones coasters

The supercycled << leather stone coasters>> is a Family of leather coasters that come in 3 different colors. This flat stones will protect delicate surfaces from glass marks and spillages

Methodology
[#lasercutting](#)

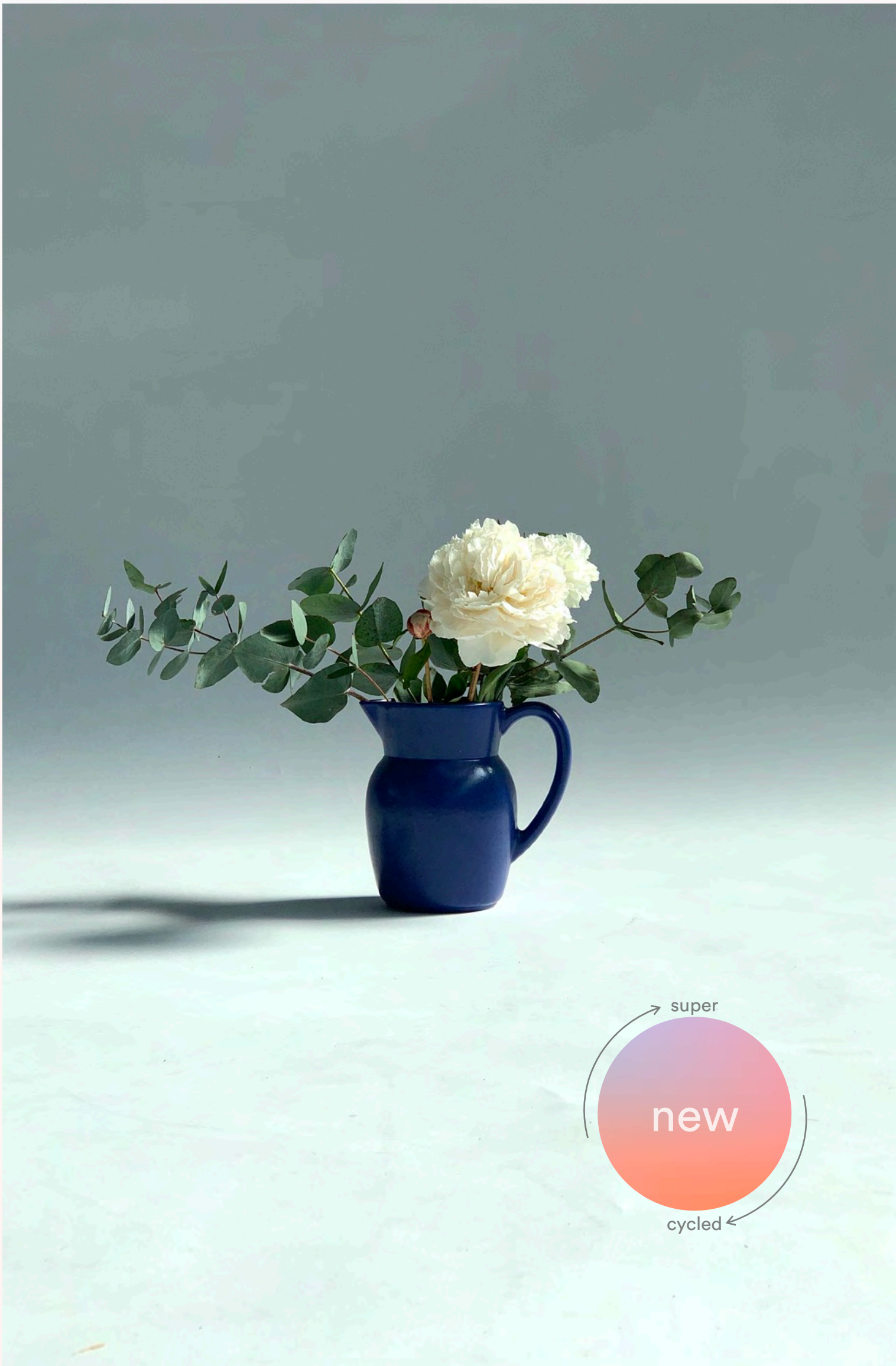
Where do I come from?
[Go to map](#)

Collaborators:
Laser cutting: Sergio Streun +
Clement Schlemmer

Supercycled resources:
HEAD Geneve

General dimensions:
coasters (s) 10 × 12 cm
coasters (xl) 21 × 25 cm

[downloads + info](#)



cobalt jug

The supercycled ceramic << cobalt jug >> can be used for containing liquids, storing items or simply as an ornament.

Methodology
[#reusing](#)

Where do I come from?
[Go to map](#)

General dimensions:
15 × 20 cm

downloads + info

products

commissions

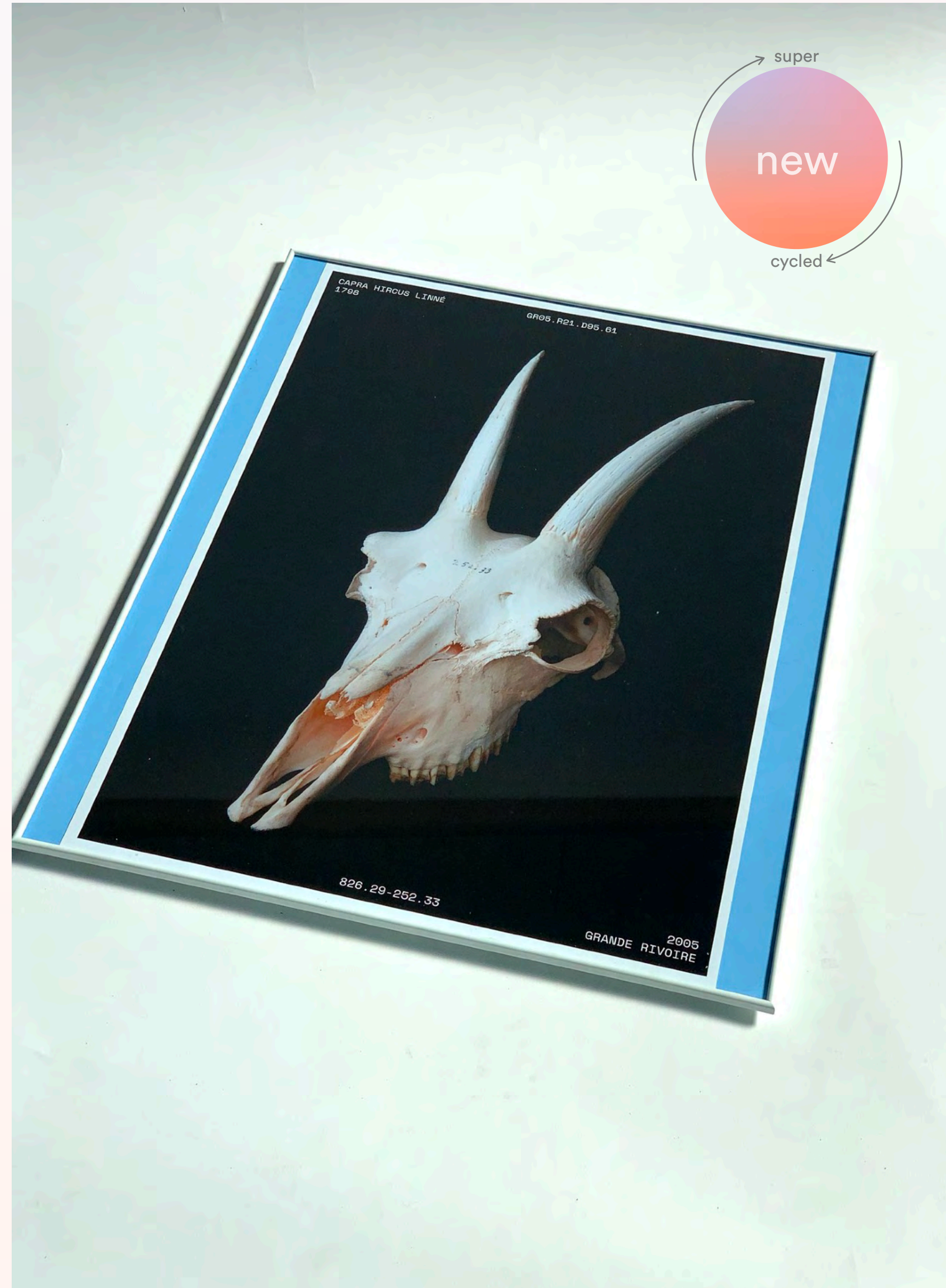
brainfood

stay in touch!

ARCHIVE

accessories/
frames

trashmanship



capra hircus framed print

The supercycled << capra hircus framed print >>
is ready to find its new home. Are you the lucky one?

Methodology
[#reusing](#)

Where do I come from?
[Go to map](#)

Supercycled resources:
HEAD Geneve

General dimensions:
50 × 70 cm

downloads + info

products

commissions

brainfood

stay in touch!

ARCHIVE/

trash

trashmanship



01



02



03



04



05



06



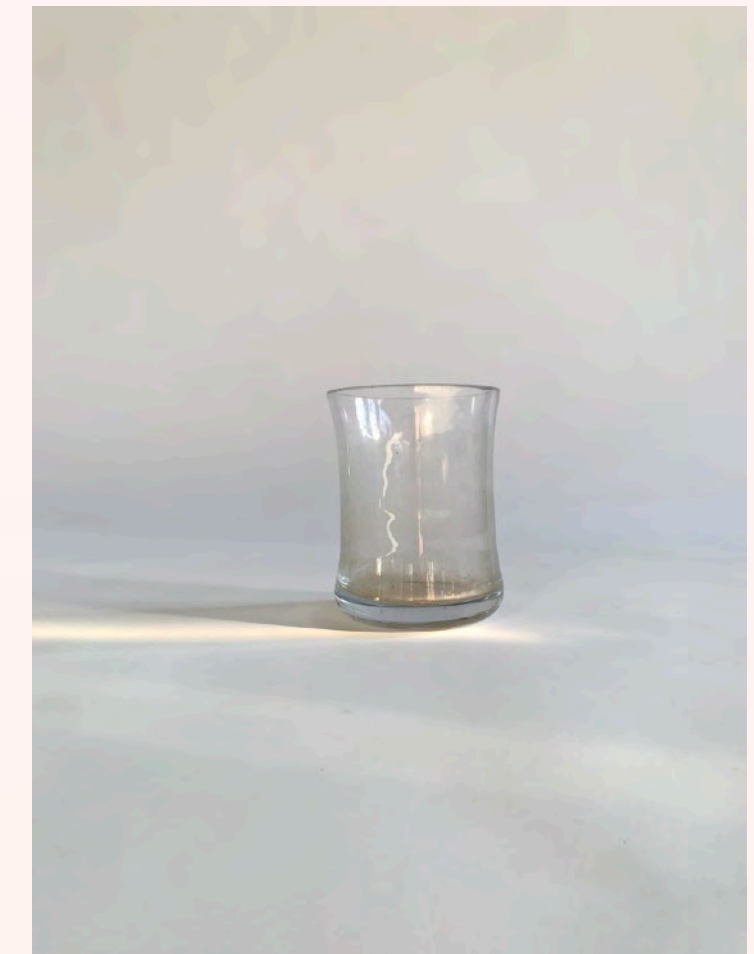
07



08



09



10

products

commissions

brainfood

stay in touch!

ARCHIVE/

treasure

trashmanship



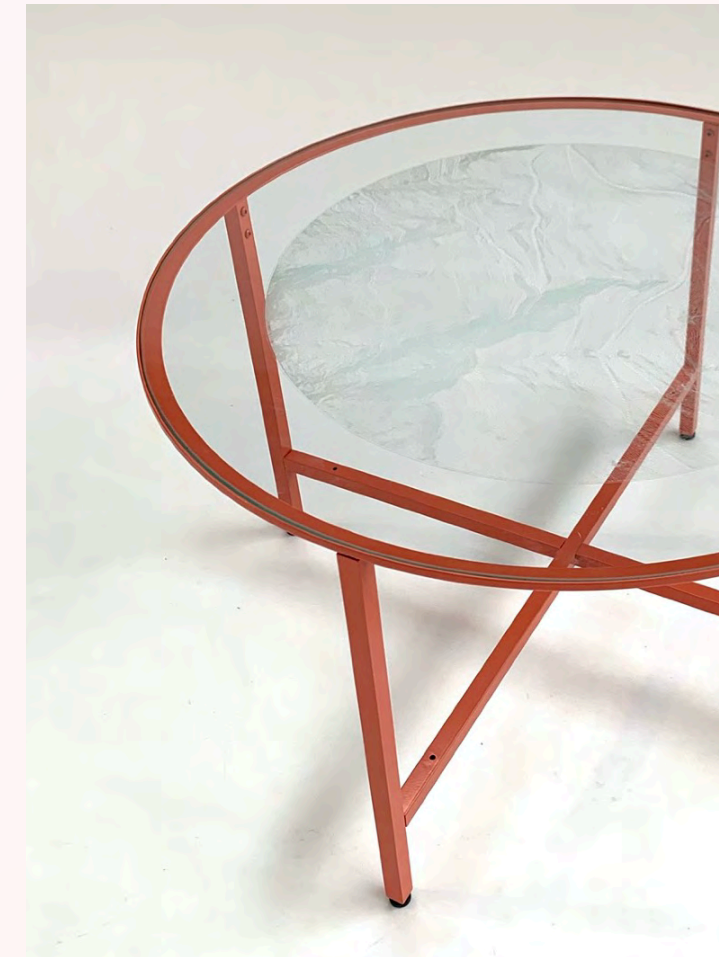
01



02



03



04



05



06



07



08



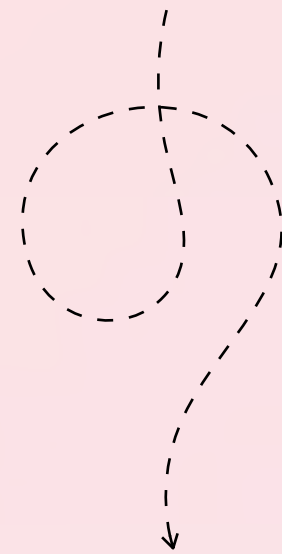
09



10

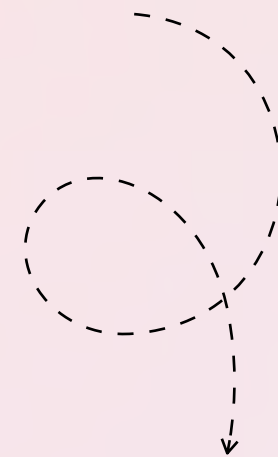
trashmanship

objects



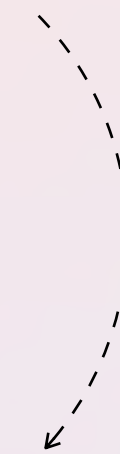
trash

materials



waste

infrastructure



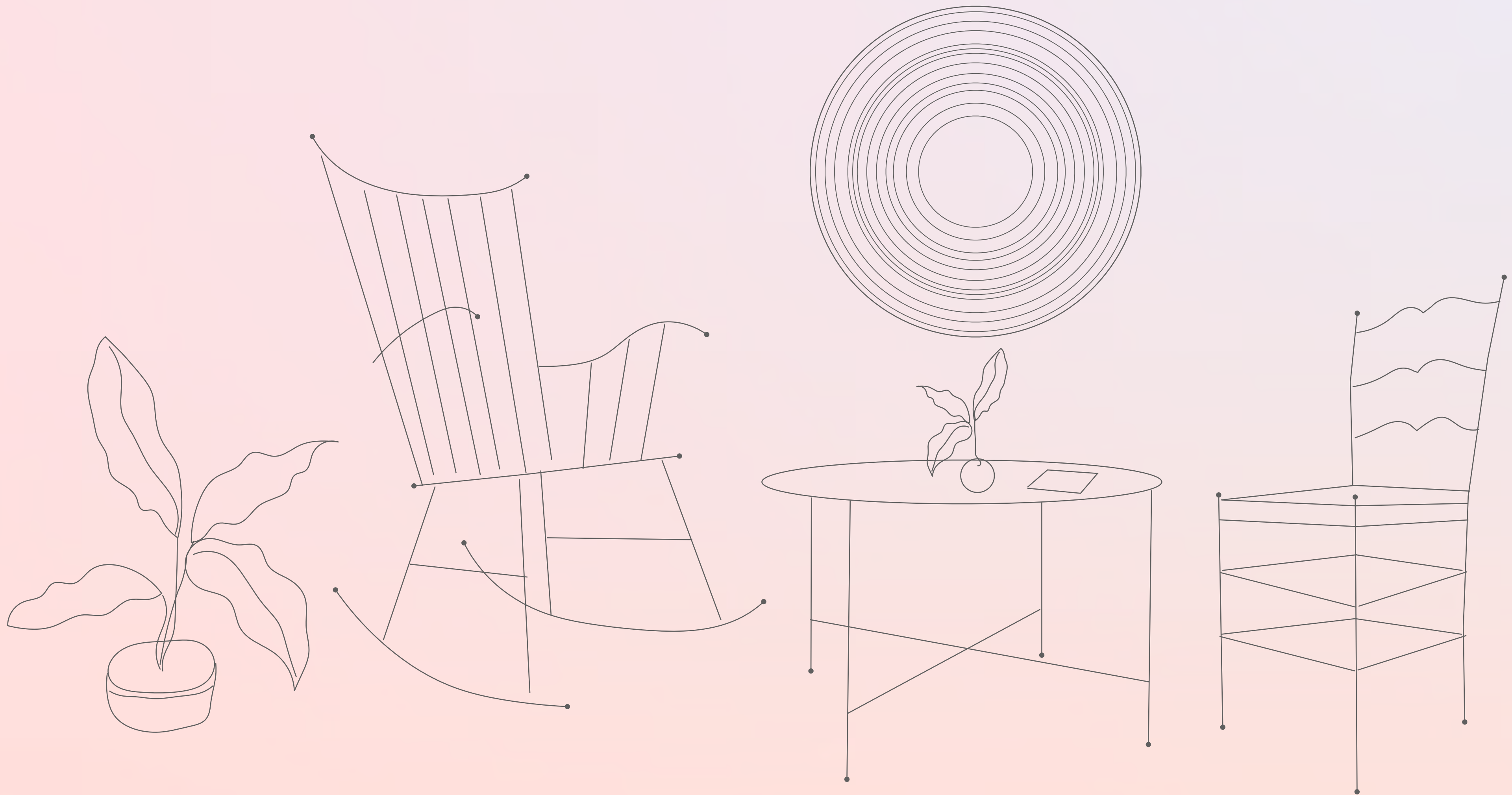
sponsored/partnerships

Can we satisfy our
“needs” without
compromising the
future ?

by Nina D'Elia



Next steps:



Under the direction of Endrias Abeyi

- HEAD Genève -

trashmanship

- M.A.I.A -

X Nina F. D'Elia H.